

# ASSEMBLY LINE SCRAPBOOKING

## December 2011 *Greetings to Go* Aurora Borealis

### Materials:

- *Aurora Borealis* Greetings to Go
- *Aurora Borealis* Unmounted (UM) Borders & Backgrounds and FontArt
- *Aurora Borealis* Unmounted Greeting and Art Nouveau
- *Aurora Borealis* Club Scrap® Unmounted Stamps
- *Aurora Borealis* Gold Dazzle Stickers (Club Scrap® Goodie)
- *Aurora Borealis* Blue Satin Pearl Embossing Powder (Club Scrap® Goodie)

### Tools and Supplies:

- 12" Paper Trimmer
- CS® Grid Ruler
- Scissors
- Adhesive
- Tape
- Foam Adhesive
- Paper Piercing Tool and Cork Board
- Craft Knife and Cutting Mat
- Scrap Paper for Masking
- Heat Tool
- Brayer
- CS® India Black, White Pigment, Rust, Sapphire, Fuchsia, and Topaz Inks
- Stapler and Staples
- Painter's Tape or Masking Tape
- White and Black Photo Mounting Corners
- Chalks
- Chalk Applicator
- CS® Ink Applicator
- Gold Glitter Glue

### Notes:

*Prepare the Sand and White cutaparts by trimming into sections as indicated by the artwork. It may work best to trim some sections with a ruler, craft knife and cutting mat.*

*If you do not have an item required to complete a card, simply omit the step or substitute the item.*



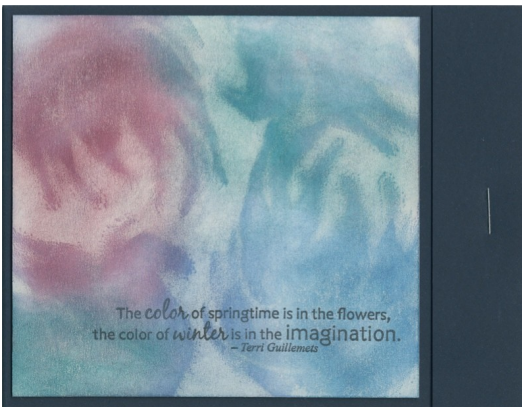
**Set A: 4 1/4 x 5 1/2" Blue Cards with 4 1/4 x 4" Gray and 4 x 3 3/4" White Panels**

**Card #1**



- Blue Card with Gray and White Panels
  - Gray Cutapart: Circular Words
  - Unmounted Greeting
  - (4) White Photo Mounting Corners
  - Organza Glitter Ribbon
1. Stamp the UM images onto the cutapart with Sapphire ink. Layer onto the White panel with photo mounting corners.
  2. Staple a swatch of ribbon to the narrow flap to the card, matchbook style. Insert the wide flap beneath the narrow flap. Nest the White panel onto the card front.
  3. Attach the Gray panel to the inside of the card.

**Card #2**



- Blue Card with Gray and White Panels
  - UM Borders & Backgrounds
1. Stamp the UM aurora borealis image onto the Gray panel with white ink. Apply assorted chalks to the inked panel.
  2. Stamp the UM quote onto the panel with black ink and layer the panel onto the card.
  3. Attach the White panel to the inside of the card. Staple the short flap to the card.

**Card #3**



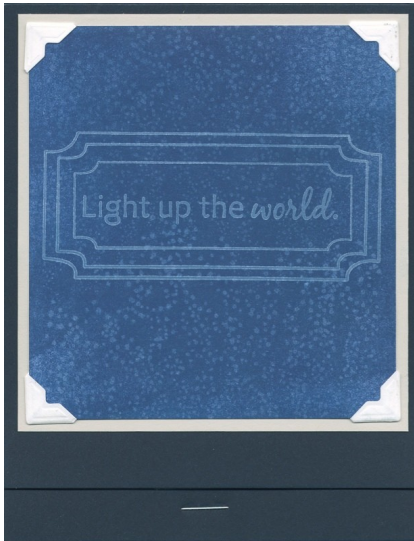
- Blue Card with Gray and White Panels
  - Sand Cutapart: "Hi"
  - Organza Glitter Ribbon
  - UM Greeting
1. Attach the cutapart to the White panel. Stamp the UM trees onto the bottom half of the panel and wrap with ribbon. Layer the panel onto the card.
  2. Staple the narrow flap to the card with a swatch of ribbon. Layer the Gray panel on the inside of the card.

**Card #4**



- Blue Card with Gray and White Panels
  - Photo Mounting Corners
  - UM FontArt
  - UM Greeting
1. Stamp the UM circular text image onto the White panel with Sapphire ink. Stamp again onto scrap paper and cut a mask.
  2. Use the circular mask to cover the center of the stamped image, and sponge Sapphire ink outward from the circle.
  3. Mask the circle with the reverse portion of the mask, and sponge Topaz ink within the center of the circle.
  4. Stamp "Happy Birthday" into the circle with India Black ink. Layer the panel onto the card with photo mounting corners.
  5. Staple the short flap to the card.

**Card #5**



- Blue Card with Gray and White Panels
  - UM Art Nouveau
  - Photo Mounting Corners
1. Stamp the UM snow/star image onto the White panel with white ink. Apply Sapphire ink onto the entire panel with a brayer.
  2. Stamp the UM framed quote onto the panel with White ink. Nest onto the Gray panel with photo mounting corners and attach to the card.
  3. Staple the short flap to the card and tuck the large panel beneath the flap.

**Set B: 3½x6½” Sand Cards with 3¼x6¼” Brown Panels**

**Card #1**



- Sand Card with Brown Panel
  - Sand Cutout: "Congratulations!"
  - Brown/White Fiber
1. Nest the cutout onto the Brown panel and wrap with fiber.
  2. Layer the nested panels onto the card.

**Card #2**



- Sand Card with Brown Panel
  - Sand Cutpart: "With Deepest Sympathy"
  - Organza Glitter Ribbon
1. Wrap ribbon around the cutpart and nest onto the Brown panel.
  2. Layer the panel onto the card.

**Card #3**



- Sand Card with Brown Panel
  - Sand Cutpart: "Thank You" and Paper Ribbon
  - Gold Brad
  - Organza Glitter Ribbon
  - UM FontArt
1. Stamp the UM text images at an angle onto the Brown panel with white ink.
  2. Wrap the Sand paper ribbon around the panel, bringing ends around to the back.
  3. Use a brad to attach ribbon to the cutpart and layer onto the panel with foam adhesive.
  4. Nest the panel onto the card.

**Card #4**



- Sand Card with Brown Panel
  - Sand Cutpart: "Hang In There. . ."
  - UM Borders & Backgrounds
  - Gold Dazzle Stickers
  - Brown/White Fiber
1. Use a craft knife to remove the center from the cutpart. Trim 1/4" from the bottom and right side of the center portion.
  2. Tie fiber around the outer frame and attach to the Brown panel.
  3. Stamp UM trees onto the cutpart and attach with foam adhesive.
  4. Attach the panel to the card and accent with Dazzle stickers.



**Card #5**



- Sand Card with Brown Panel
  - Club Scrap® UM Stamps
  - UM Art Nouveau
1. Stamp the UM tree image onto the Brown panel with white ink and heat emboss with Blue Satin Pearl powder.
  2. Stamp the moon onto the panel with white ink.
  3. Mask the frame of the UM quote and ink text only with white ink. Remove the mask and stamp onto the Brown panel. Layer the panel onto the card.

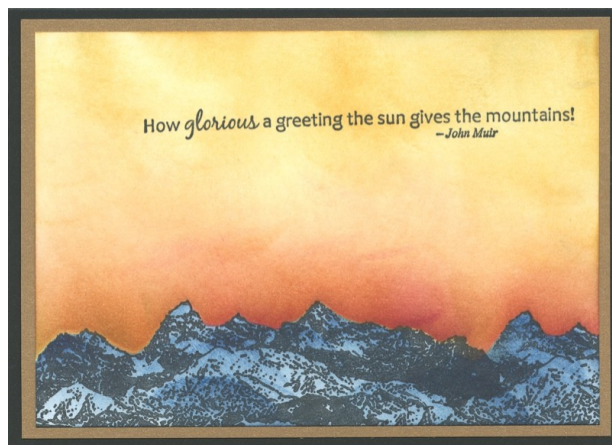
**Set C: 4½x6¼” Black Cards with 4¼x6” Gold and 4x5¾” White Panels**

**Card #1**



- Black Card with Gold and White Panels
  - CS® Unmounted Stamps
1. Stamp the UM moon image onto the White panel with white ink.
  2. Mask the lower half of the panel with torn scrap paper and brayer Sapphire ink onto the panel. With mask in place, stamp the UM stars onto the panel.
  3. Stamp UM tree and quote images onto the lower portion of the panel with black ink.
  4. Nest the White and Gold panels onto the card.

**Card #2**



- Black Card with Gold and White Panels
  - UM Borders & Backgrounds
1. Stamp the UM mountain image with black ink onto the White panel. Mask the image and sponge Topaz, Rust and Fuchsia ink above the masked image.
  2. Mask the sky portion of the panel and sponge Sapphire ink onto the stamped mountain image.
  3. Stamp the UM quote onto the panel.
  4. Nest the White and Gold panels onto the card.



**Card #3**



- Black Card with Gold and White Panels
  - Gray Cutaparts: “Happiest of All Birthdays” and Strips
  - Gold Dazzle Stickers
  - Organza Glitter Ribbon
1. Staple a ribbon swatch to the cutapart and layer onto the Gold panel.
  2. Wrap two paper ribbons above and below the cutapart and add Dazzle stickers.
  3. Nest the Gold panel onto the card. Add the White panel to the inside of the card.

**Card #4**



- Black Card with Gold and White Panels
  - Gray Cutapart: Tree
  - (6) Gold Brads
  - (4) Black Photo Mounting Corners
1. Add brads and glitter glue to the cutapart and attach to the White panel with black photo mounting corners.
  2. Nest the White and Gold panels onto the card.

**Card #5**



- Black Card with Gold and White Panels
  - Gray Cutapart: Moon and Paper Ribbon
  - Sand Cutapart: “One Kind Word. . .”
  - Gold Dazzle Stickers
1. Nest the “moon” cutapart onto the Gold panel. Wrap the paper ribbon around the lower portion of the card, securing the ends on the back.
  2. Attach the Sand cutapart with foam adhesive and accent the paper ribbon with gold Dazzle stickers.
  3. Layer the Gold panel onto the card. Attach the White panel to the inside of the card.

