

## November 2011 *Greetings to Go* Tilscapes

### Materials:

- *Tilscapes* Greetings to Go
- *Tilscapes* (UM) Borders & Backgrounds and FontArt
- *Tilscapes* Unmounted Greeting and Art Nouveau
- *Tilscapes* Club Scrap® Unmounted Stamps
- *Tilscapes* Stencil
- *Tilscapes* White and Olive Plain Papers

### Tools and Supplies:

- 12" Paper Trimmer
- Scissors
- Adhesive
- Tape
- Foam Adhesive
- Paper Piercing Tool and Cork Board
- Craft Knife and Cutting Mat
- CS® Leaf, Lagoon, and India Black Inks
- CS® Ink Applicator
- CS® Grid Ruler
- CS® *Comfort Zone* JR Sunny Daisies (Goodie)
- (8) White Photo Mounting Corners
- Pencil
- Watercolor Pencils
- Water Brush
- Watercolor Crayons
- Water Misting Bottle
- Scrap paper for masking

### Notes:

*Prepare the White and Tangerine cutaparts by trimming into sections according to the artwork.*

*If you do not have an item required to complete a card, simply omit the step or substitute the item.*



**Set A: 5x7" Tangerine Cards with 4½x6½" Dark Teal Panels**

**Card #1**



- Tangerine Card and Dark Teal Panel
  - White Cutpart: "Thanks a Bunch!"
  - Stencil and Ink Applicator
  - (4) White Photo Mounting Corners
1. Use a ruler and craft knife to cut the three large printed squares from the White cutpart. Temporarily nest the cutpart onto the Dark Teal panel and mark the location of the three square openings with a pencil.
  2. Use the stencil to add a texture within each opening with Leaf ink, masking the other window openings as needed.
  3. Layer the three cut squares onto the cutpart with foam adhesive, nest the cutpart onto the panel, and attach the panel to the card with photo mounting corners.

**Card #2**



- Tangerine Card and Dark Teal Panel
  - 2-1/2x5-1/2" Tangerine Panel (From Set B)
  - Tangerine Ribbon
  - UM Borders & Backgrounds
  - Club Scrap Unmounted Stamps
  - White Plain
1. Mist and color the large UM tile image with watercolor crayons. Stamp onto White Plain. Cut 2½" strips of stamped tiles and attach to the Tangerine panel. Stamp the UM quote onto the panel with India Black ink.
  2. Attach the Tangerine panel to the Dark Teal panel. Wrap ribbon around the panel and layer onto the card.

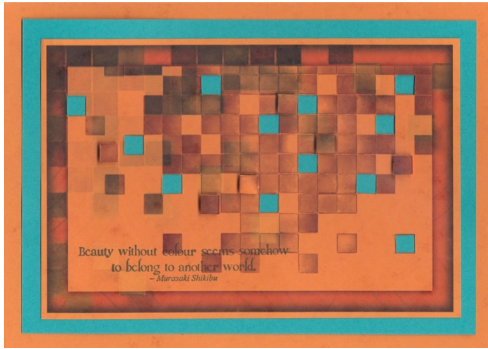
**Card #3**



- Tangerine Card and Dark Teal Panel
  - Tangerine Ribbon
  - (3) Tangerine Mini Brads
  - Club Scrap Unmounted Stamps
  - UM Greeting Stamp
1. Stamp the UM texture image onto the Dark Teal panel in angled rows. Mask each row and edge with ink to add shape to the stamped image, if desired.
  2. Stamp the UM greetings onto the panel with India Black ink.
  3. Wrap ribbon around the panel, set three brads into the upper right corner, and layer the panel onto the card.



**Card #4**



- Tangerine Card and Dark Teal Panel
  - Tangerine Cutapart: Mini Square Tiles
  - UM Borders & Backgrounds
1. Using a craft knife and cutting mat, cut random square tiles from the Tangerine cutapart. Mount the removed tiles back onto the cutapart with foam adhesive to add dimension.
  2. Stamp the UM quote onto the bottom left corner of the cutapart with India Black ink and layer onto the Dark Teal panel. Nest the panel onto the card.

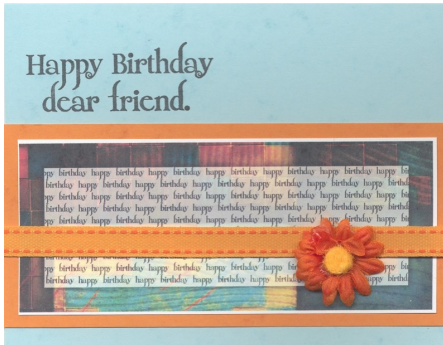
**Card #5**



- Tangerine Card and Dark Teal Panel
  - White Cutapart: "I'm So Sorry."
1. Here's an easy one! Nest the cutapart and panel onto the card. Add fibers, stamped images or other embellishments if you wish, or just keep it simple 'n easy!

**Set B: 4 1/4 x 5 1/2" Sky Cards with 2-1/2 x 5-1/2" Tangerine Panels**

**Card #1**



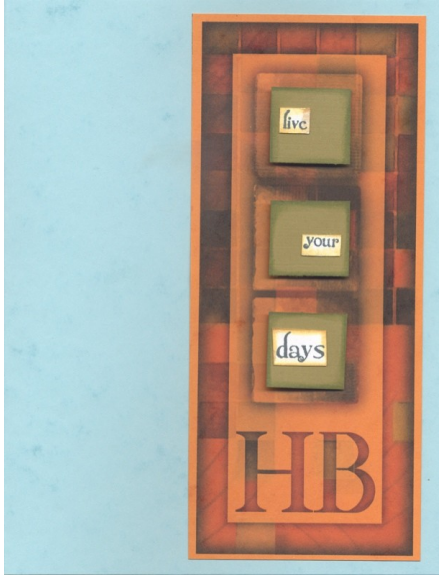
- Sky Card and Tangerine Panel
  - White Cutapart: "Happy Birthday"
  - Sunny Daisy Flower
  - UM Greeting
  - Tangerine Ribbon
1. Nest the cutapart onto the Tangerine panel, add the flower embellishment (optional), and wrap with ribbon. Layer onto the lower portion of the card.
  2. Stamp the UM greeting onto the upper left corner with India Black ink.

**Card #2**



- Sky Card and Tangerine Panel
  - White Cutapart: "Happy Anniversary to You Both"
  - Club Scrap UM Stamps
1. Use a craft knife to remove random square tiles from the White cutapart. Nest the cutapart onto the Tangerine Panel.
  2. Stamp the UM tile images onto the Sky card with Leaf ink. Attach the panel to the card and layer the trimmed tiles onto the card and cutapart with foam adhesive.

**Card #3**



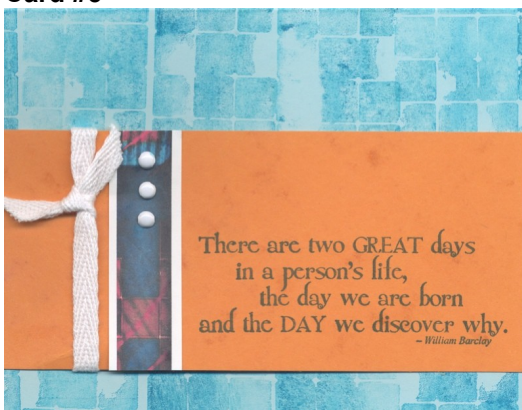
- Sky Card
  - Tangerine Cutapart: "HB"
  - Olive and White Plains
  - UM Borders & Backgrounds
1. Cut three  $\frac{3}{4} \times \frac{3}{4}$ " Olive squares from the Olive Plain. Layer within the three larger square tiles on the Tangerine cutapart with foam adhesive.
  2. Stamp UM quotes onto White Plain with India Black ink, cut out specific words, as desired, and layer onto the Olive squares.
  3. Attach the Tangerine cutapart to the Sky card.

**Card #4**



- Sky Card and Tangerine Panel
  - $3\frac{1}{4} \times 5\frac{1}{2}$ " White Panel (From Set C)
  - UM Font, UM Art Nouveau, Club Scrap UM Stamps
1. Stamp the UM Art Nouveau image onto the Tangerine panel with Lagoon ink.
  2. Stamp the CS unmounted tile image onto the White panel with Lagoon Ink.
  3. Stamp the UM word swirl onto the Sky card with Lagoon ink. Nest the layers together onto the card.

**Card #5**



- Sky Card and Tangerine Panel
  - White Cutapart: Printed Strip
  - UM Borders & Backgrounds
  - White Twill
  - (3) White Mini Brads
1. Stamp the UM tile strip onto the Sky card with Lagoon ink.
  2. Stamp the UM quote onto the Tangerine panel with India Black ink. Attach the White cutapart and wrap with white twill.
  3. Layer the panel onto the card.

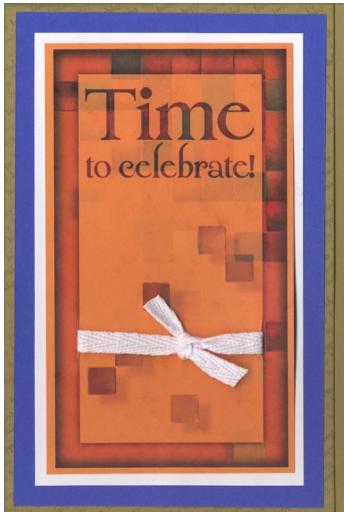
**Set C” 4¼x6¼” Olive Cards with 3¾x6” Dark Blue and 3¼x5½” White Panels**

**Card #1**



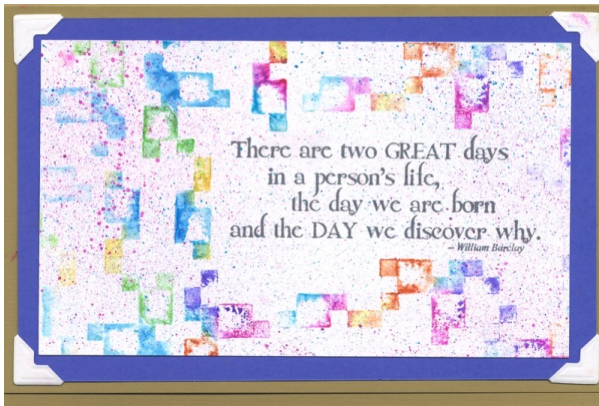
- Olive Card with Dark Blue and White Panels
  - Tangerine Cutapart: “Thanks and More Thanks”
1. You’re due for a nice, simple card. Simply layer the Tangerine cutapart onto the White and Dark Blue panel. Layer the panel onto the card flap. (If the panel does not nest onto the card flap, reverse the card flaps so that the other one is on top. It should nest perfectly.)

**Card #2**



- Olive Card with Dark Blue and White Panels
  - Tangerine Cutapart: “Time to Celebrate!”
  - White Twill
1. Use a craft knife to cut a small slit on the left and right inside edge of the printed frame on the Tangerine cutout. Thread the twill through the slit and tie the ends into a bow.
  2. Nest the Tangerine cutapart, White panel and Dark Blue panel onto the card.

**Card #3**



- Olive Card with Dark Blue and White Panels
  - UM Borders & Backgrounds
  - (4) White Photo Mounting Corners
1. Mist the small UM tile image with water and color with watercolor crayons. Stamp onto the White panel. Re-mist and repeat as desired. Stamp the UM quote onto the panel with India Black ink and splatter with additional watercolors.
  2. Nest the White and Dark Blue panels and attach to the Olive card with white photo mounting corners.



**Card #4**



- Olive Card with Dark Blue and White Panels
  - UM Borders & Backgrounds
1. Stamp the UM quote onto the White panel with India Black ink.
  2. Using a ruler, draw a line beneath the first two lines of stamped text with a red watercolor pencil. Next, use the side of the pencil lead to create a lighter band of color just above the line.
  3. Repeat Step 2 with remaining colors of rainbow and lightly blend the colors with a water brush.
  4. Nest the White and Dark Blue panels onto the Olive card.

**Card #5**



- Olive Card and Dark Blue Panel
  - White Cutapart: "Happy Birthday Dear Friend"
  - White Twill
1. Use a craft knife to cut the inner image from the White cutapart.
  2. Tie white twill around the top and bottom portions of the remaining frame. Layer the frame onto the Dark Blue panel and nest the panel onto the card.
  3. Attach the trimmed portion of the frame to the card at an angle with foam adhesive.

