



Assembly Line Scrapbooking

January 2010 Club Scrap® JR Jubilee

Materials:

- Jubilee CS® JR Kit

Tools:

- 12" Paper Trimmer
- 3x13" CS® Grid Ruler
- Adhesive
- CS® Fuchsia Ink
- Silver Pigment Ink
- Paper Piercing Tool and Cork Board

Fraction to Decimal Conversions

$1/8" = .125"$ $1/2" = .5"$ $7/8" = .875"$

$1/4" = .25"$ $5/8" = .625"$

$3/8" = .375"$ $3/4" = .75"$

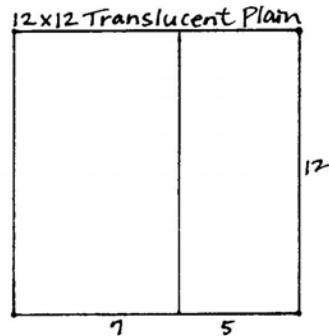


Layout #1 and #2

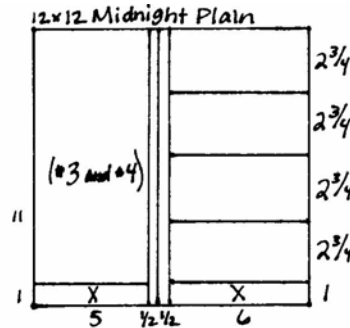


- 12x12 Dark Pink Print
- 12x12 Dark Pink Plain
- 12x12 Translucent Plain
- 12x12 Midnight Plain
- (2) 4.25x6.25 Dark Pink Plain Photo Mattes
- (2) 4.25x6.25 Translucent Plain Photo Mattes
- Grey Cutouts
- Polka Dot Grosgrain Ribbon
- Stickers

1. Trim the 12x12 Translucent Plain at 7”.



2. Cut the 12x12 Midnight Plain at 6, 5.5, and 5”. Trim the 5x12 horizontally at 11”. Cut the 6x12 horizontally at 11, 8.25, 5.5, and 2.75”.



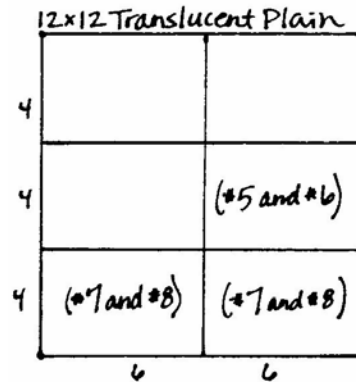
Layout #3 and #4



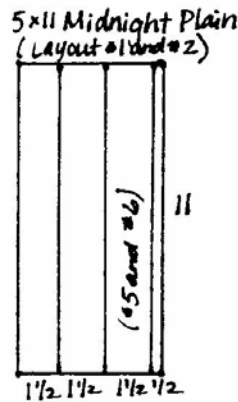
- 12x12 Light Pink Plain
- 12x12 Dark Pink Print
- 12x12 Translucent Plain
- 5x11 Midnight Plain (From Layout #1 and #2)

- (2) 4.25x6.25 Dark Pink Print Photo Mattes
- Light and Dark Pink Cutouts
- (4) Pink Brads
- Stickers

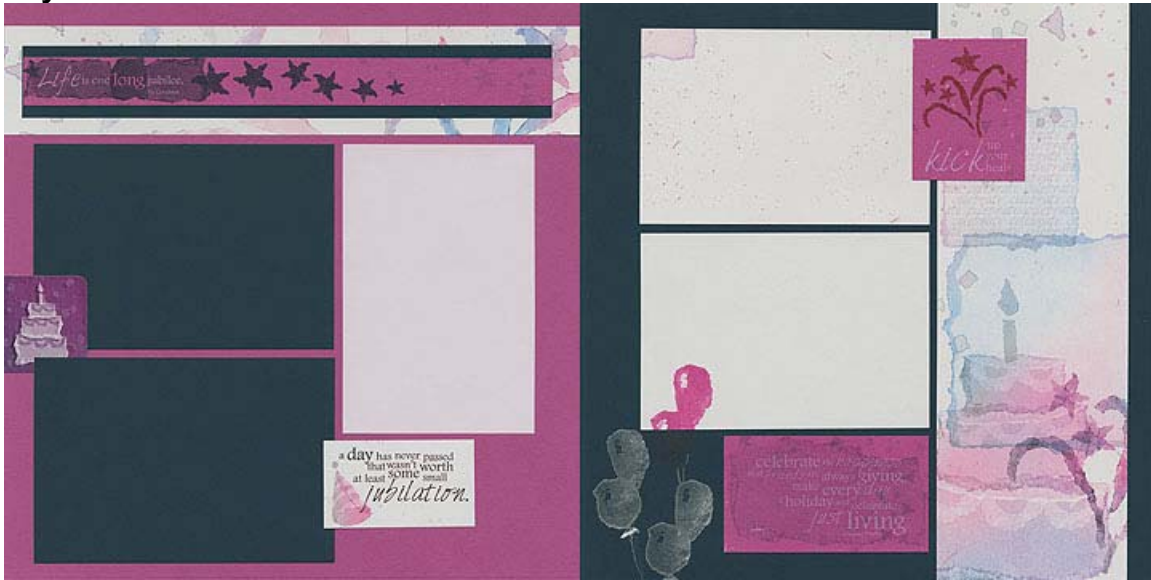
1. Trim the 12x12 Translucent Plain at 6". Cut each 6x12 horizontally at 8 and 4".



2. Cut the 5x11 Midnight Plain vertically at 4.5, 3, and 1.5".

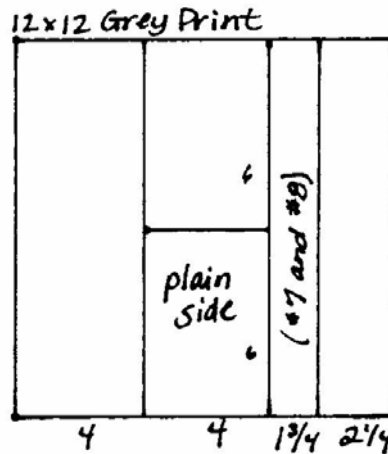


Layout #5 and #6

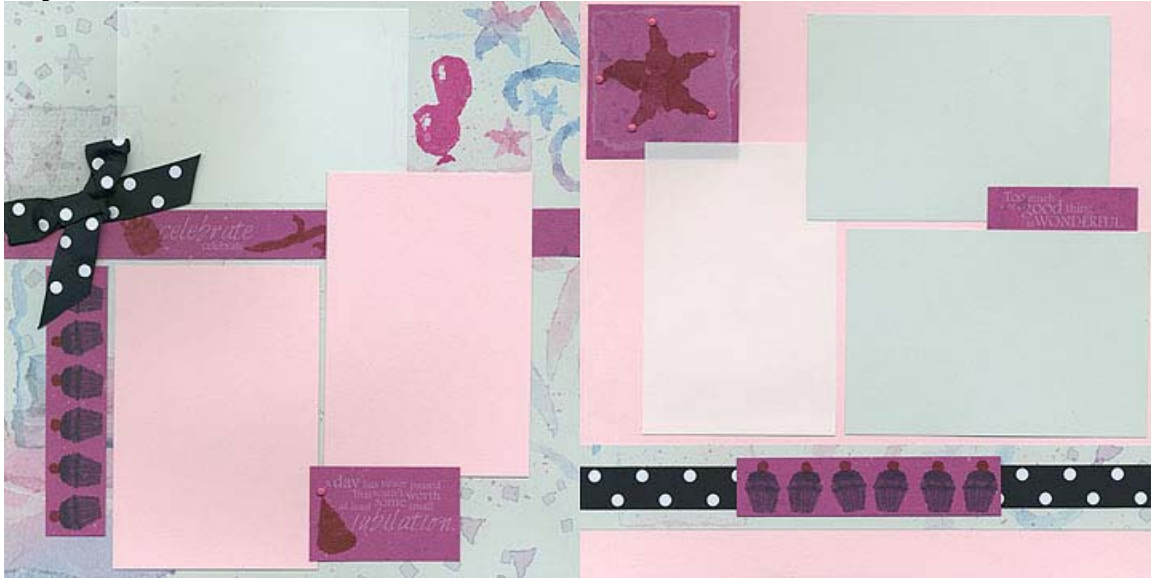


- 12x12 Dark Pink Plain
- 12x12 Midnight Plain
- 12x12 Grey Print
- (2) 4.25x6.25 Midnight Plain Photo Mattes
- 4x6 Translucent Plain (From Layout #3 and #4)
- 1.5x11 Midnight Plain (From Layout #3 and #4)
- Dark Pink and Grey Cutouts
- Wood Mounted Stamp
- CS® Fuchsia Ink
- Silver Pigment Ink
- Stickers

1. Trim the 12x12 Grey Print at 9.75, 8, and 4". Cut one 4x12 horizontally at 6".



Layout #7 and #8



- 12x12 Grey Print
- 12x12 Light Pink Plain
- (2) 4.25x6.25 Light Pink Plain Photo Mattes
- (2) 4.25x6.25 Grey Plain Photo Mattes
- (2) 4x6 Translucent Plain (From Layout #3 and #4)
- 1.75x12 Grey Print (From Layout #5 and #6)
- Polka Dot Grosgrain Ribbon
- Dark Pink Cutouts
- (6) Pink Brads
- Wood Mounted Stamp
- CS® Fuchsia Ink

1. No trimming...enjoy!

