

October 2010 Greetings to Go Scholarship

Materials:

- *Scholarship* Greetings to Go
- *Scholarship* Unmounted Borders & Backgrounds and FontArt

Tools and Supplies:

- 12" Paper Trimmer
- Adhesive
- CS® Grid Ruler
- Paper Piercing Tool and Cork Board
- Foam Adhesive
- Tape
- Craft Knife and Cutting Mat
- CS® Onyx, Earth, Ruby, and Sapphire Ink
- Colored Pencils
- Watercolor Pencils
- Waterbrush
- Paper Distressing Tool
- Stapler and Staples
- Black Photo Mounting Corners
- Brush Tip Markers
- Water Spray Bottle
- Copper Acrylic Paint
- Paintbrush
- White Sticker Stock or White Plain

Measurement Conversions:

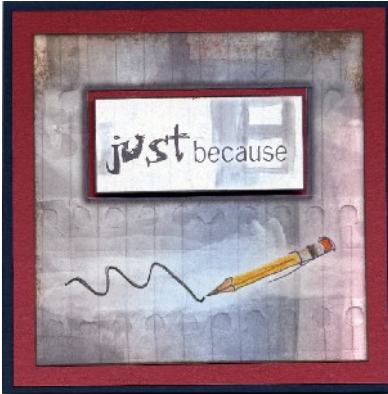
.25 = $\frac{1}{4}$ "
.5 = $\frac{1}{2}$ "
.75 = $\frac{3}{4}$ "

Notes: Trim the 12x12 Tan and White Cutparts into sections as indicated by the printed artwork. Fold all cards along score lines and reinforce creases with a bone folder. Before making creases, check to make sure that all edges are aligned. The edges of many finished cards, panels and die cuts have been colored with ink. This step is optional, and the directions to ink edges are not included below. For a softer look, ink with a sponge or stylus tool with blender tip. For a bolder effect, ink directly from the pad onto the card. If you do not have an item required to complete a card, simply omit the step or substitute the item.



Set A: 5¼x5¼” Blue Cards with 5x5” Metallic Red Panels

Card #1



- Dark Blue Card with Metallic Red Panel
 - White Cutpart: “Just Because”
1. Use a cutting mat, ruler and craft knife to remove the text frame from the cutpart. Trim the frame slightly smaller.
 2. Fill in the pencil image with colored pencils. Nest the cutpart onto the Metallic Red panel and Dark Blue card. Attach the text frame into the opening with foam adhesive.

Card #2



- Dark Blue Card with Metallic Red Panel
 - Light Blue Panel (Set C)
 - White Panel (Set B)
 - Tan Cutpart
 - UM Borders & Backgrounds
1. Stamp the UM globe image onto the Light Blue panel with Onyx ink. Nest onto the White and Red panels; layer onto the Dark Blue card.
 2. Stamp the UM quote onto the Tan cutpart with Onyx ink and attach to the card with foam adhesive.

Card #3



- Dark Blue Card with Metallic Red Panel
 - Tan Cutparts: “Thank,” “You,” and (2) Squares
 - White Organza Ribbon
1. Trim the Metallic Red panel into a 3/8” frame with a ruler, craft knife and cutting mat.
 2. Tie three short lengths of ribbon onto the upper right edge of the frame. Attach the frame to the Dark Blue card with foam adhesive.
 3. Layer the four Tan squares onto the card.



Card #4



- Dark Blue Card with Metallic Red Panel
 - White Cutpart: “Happy, Happy, Happy. . .”
 - Tan Cutaparts: “Happy” and “Anniversary”
1. Trim the Metallic Red panel to fit the White cutpart. Nest and layer onto the bottom of the Dark Blue card.
 2. Attach the Tan cutaparts as shown.

Card #5



- Dark Blue Card with Metallic Red Panel
 - White Cutpart: “Big Wishes”
 - Blue Grosgrain Ribbon
 - (3) Blue Mini Brads
1. Wrap the ribbon around the upper left and lower right corners of the cutpart and secure with tape.
 2. Attach three mini brads to the upper right side of the text frame.
 3. Layer the cutpart onto the Metallic Red panel and Dark Blue card.

Set B: 4¼x5½” Tan Cards with 4x5¼” Dark Blue and 3½x4¾” White Panels

Card #1



- Tan Card with Dark Blue Panel
 - Tan Cutaparts: “Happy,” “Birthday,” and Art Square
 - (3) Blue Mini Brads
 - Blue Grosgrain Ribbon
1. Attach the three cutaparts to the Dark Blue panel as shown. Set three brads into the upper center square.
 2. Wrap a length of ribbon around the top of the panel and attach to the card.

Card #2



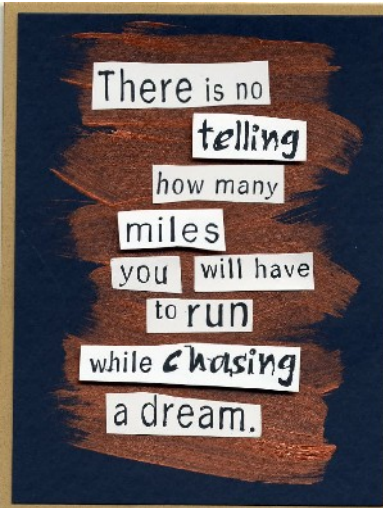
- Tan Card with Dark Blue Panel
 - White Cutpart: “With Deepest Sympathy”
 - Blue Grosgrain Ribbon
1. Distress the edges of the cutpart with a paper distressing tool. Staple three lengths of ribbon to the left edge of the cutpart.
 2. Attach the cutpart to the Dark Blue panel with foam adhesive. Nest onto the card.

Card #3



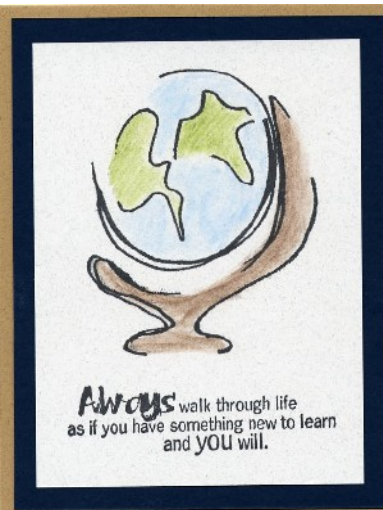
- Tan Card with Dark Blue and White Panels
 - UM FontArt
 - UM Borders & Backgrounds
1. Place the long UM FontArt image onto the smooth side of a CS® Grid Ruler (if using MountIt adhesive). Color the stamp with water-base brush tip markers, and spritz lightly with water after image is colored. Stamp onto the White panel.
 2. Stamp the UM schoolhouse onto the lower right corner of the panel with Onyx ink.
 3. Mount the White panel onto the Dark Blue panel with black photo mounting corners. Attach the panels onto the Tan card.

Card #4



- Tan Card with Dark Blue Panel
 - UM FontArt
 - White Plain or White Sticker Stock
1. Paint the Dark Blue panel with copper acrylic paint and set aside to dry.
 2. Stamp the UM quote onto the material of choice. Cut out each phrase or expression as desired.
 3. Attach the phrases to the painted panel with adhesive, alternating with foam adhesive to add dimension.
 4. Nest the Dark Blue panel onto the card.

Card #5



- Tan Card with Dark Blue and White Panels
 - UM Borders & Backgrounds
1. Stamp the UM globe image and quote onto the White panel with Onyx ink.
 2. Color the stamped image with watercolor pencils and blend with a waterbrush.
 3. Nest the panels onto the card.



Set C: 3½x5” White Cards with 3x4½” Light Blue Panels

Card #1



- White Card with Light Blue Panel
 - White Cutpart: “Congratulations”
 - Blue Grosgrain Ribbon
1. Distress the edges of the White cutpart with a paper distressing tool.
 2. Cut a small slit on the right and left sides of the text box with a craft knife. Thread the ribbon through the slits and tie into a knot.
 3. Nest the cutpart onto the panel and card.

Card #2



- White Card with Light Blue Panel
 - White Cutpart: “Thank You”
 - UM Borders & Backgrounds
 - Blue Grosgrain Ribbon
 - Blue Mini Brad
1. Make a loop with the ribbon and attach to the cutpart with a blue brad.
 2. Stamp the White card with a UM quote and Onyx ink to create a background.
 3. Nest the Blue panel and cutpart onto the card.

Card #3



- White Card with Light Blue Panel
 - UM Borders & Backgrounds
 - UM FontArt
1. Stamp the Light Blue panel with the UM art image using Sapphire, Ruby and Earth ink. Re-ink and stamp until a background is created.
 2. Stamp the UM quote onto the lower right corner of the panel with Onyx ink. Nest the panel onto the card.

Card #4



- White Card with Light Blue Panel
 - White Cutapart: Pencil and Notepad
 - Tan Cutaparts: "Just" and "Cuz"
 - (3) Blue Mini Brads
1. Nest the White and Tan cutaparts onto the Light Blue panel as shown.
 2. Attach the brads to the upper right corner of the cutapart and layer onto the card.

Card #5



- White Card
 - White Cutapart: "You're the Best!"
 - Tan Cutapart: Art Square
 - White Organza Ribbon
 - UM Borders & Backgrounds
1. Nest the White cutapart onto the card.
 2. Stamp the Tan cutapart with the "memo:" quote, tie with ribbon and attach to the card with foam adhesive.

